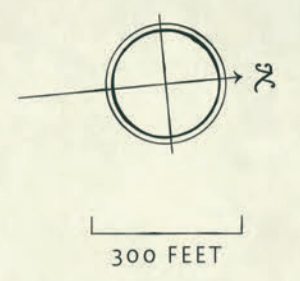
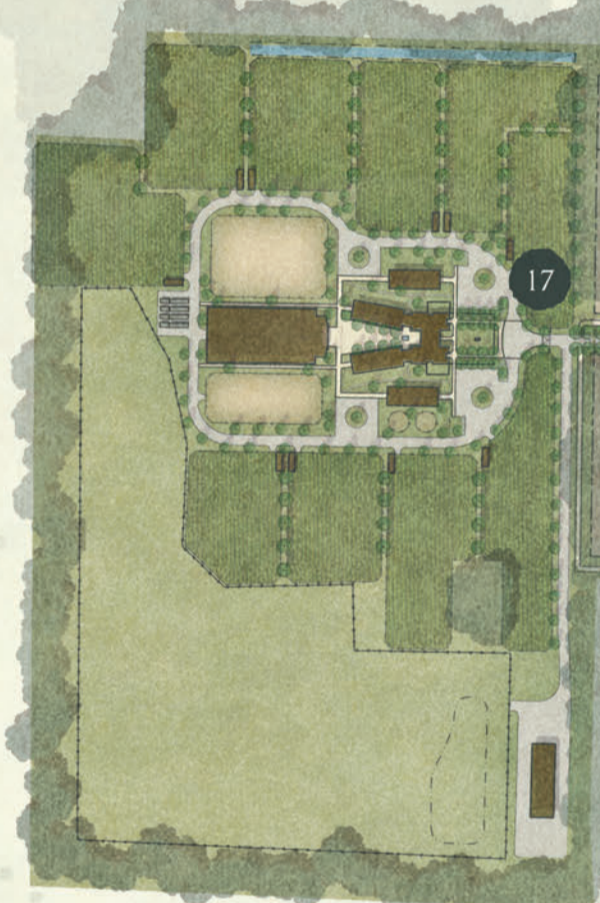


to Leiper's Fork
8 miles

to Columbia
30 miles



WEST HARPE TH RIVER



to Downtown Nashville
20 miles

to Nashville International Airport
25 miles

to Downtown Franklin
4 miles

Nestled amongst 600 acres of rolling hills in Franklin, Tennessee, lies an enchanting village where wildflowers grow freely amidst a cozy collection of secluded private residences and well-suited social comforts. Crafted for discovery and quietude, Wyelea beckons those who believe home is a heartfelt calling, offering a life brimming with joy and contentment.

- | | | |
|------------------------|-------------------|----------------|
| 1. FRONT MEADOW | 7. HEARTH | 13. PITCH |
| 2. FIELD & FIELD BARN | 8. THE BEVY | 14. HALE HOUSE |
| 3. THE POST | 9. COMMONS LAKE | 15. THE RAMBLE |
| 4. THE GREEN | 10. BEACH | 16. RIVER CAMP |
| 5. THE RANGE | 11. THE WATERSHED | 17. STABLES |
| 6. DAYLESFORD COTTAGES | 12. THE WELL | |

● THE COMMONS ● HOMESITES — WALKING & HIKING TRAILS

WYELEA

Del Rio Pike

Entrance

Mack Hatcher Parkway

MIRIAM LANE

OSWILL GARDENS

LECHLAGE COURT

DAVEY ROAD

KENNESITT ROAD

SOUTHCOT ROAD

SOUTHCOT ROAD

Del Rio Pike